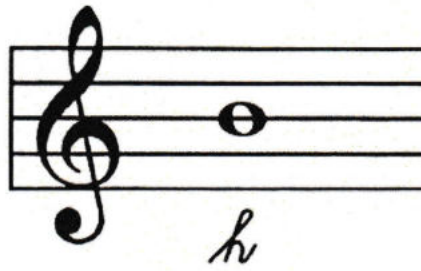


1.

# NOTA *h*



## 1. cvičení

2 G D G D G Emi A D

G D G H. E A, D G

The first exercise consists of two staves of music. The first staff starts with a treble clef and a 2/4 time signature. It contains two measures of rests, followed by a sequence of notes: G, D, G, D, G, Emi, A, D. The second staff continues with notes: G, D, G, H., E, A., D, G.

## 2. cvičení

4 G Emi A D G Emi A D

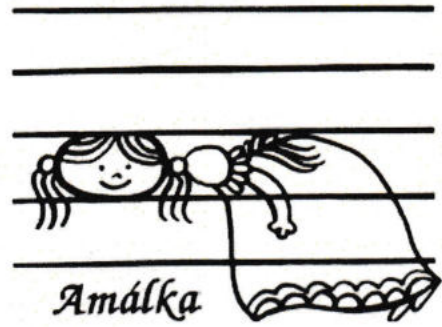
G Emi A D G Emi C D G Emi A D G Emi C D

The second exercise consists of two staves of music. The first staff starts with a treble clef and a 4/4 time signature. It contains two measures of rests, followed by a sequence of notes: G, Emi, A, D, G, Emi, A, D. The second staff continues with notes: G, Emi, A, D, G, Emi, C, D, G, Emi, A, D, G, Emi, C, D.

2.



# NOTA *a*



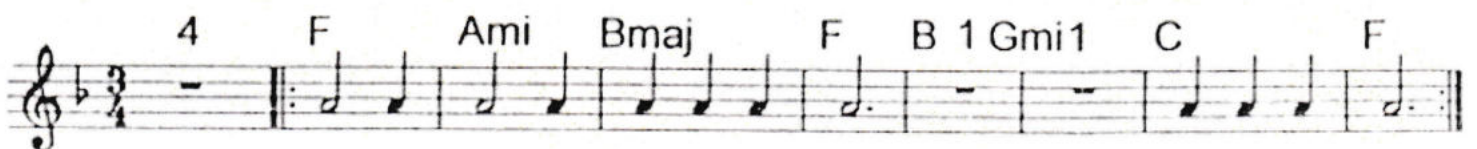
### 3. cvičení



### 4. cvičení



### 5. cvičení



# 3.

## 6. cvičení

Musical score for exercise 6, measures 5-14. The score is written in 4/4 time and consists of three staves. The first staff starts with a measure rest for 5 measures, followed by a repeat sign and a sequence of notes: G4, A4, B4, C5, B4, A4, G4, F4, E4, D4, C4. Chords A, D, and A are indicated above the first three measures. The second staff starts at measure 10 with notes: G4, A4, B4, C5, B4, A4, G4, F4, E4, D4, C4. Chords D, Dm, and A are indicated above the first three measures. The third staff starts at measure 14 with notes: G4, A4, B4, C5, B4, A4, G4, F4, E4, D4, C4. Chords E, D, and A are indicated above the first three measures. The piece ends with a double bar line and repeat dots.

## 7. cvičení

Musical score for exercise 7, measures 4-13. The score is written in common time (C) and consists of three staves. The first staff starts with a measure rest for 4 measures, followed by a repeat sign and a sequence of notes: G4, A4, B4, C5, B4, A4, G4, F4, E4, D4, C4. Chords A, D, Dm, and A are indicated above the first four measures. The second staff starts at measure 9 with notes: G4, A4, B4, C5, B4, A4, G4, F4, E4, D4, C4. Chords D, Fm, and A are indicated above the first three measures. The third staff starts at measure 13 with notes: G4, A4, B4, C5, B4, A4, G4, F4, E4, D4, C4. Chords E, D, A, D, and A are indicated above the first five measures. The piece ends with a double bar line and repeat dots.

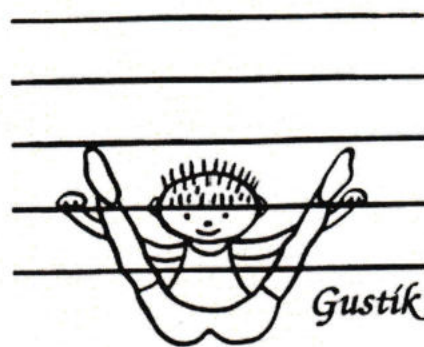
## 8. cvičení

Musical score for exercise 8, measures 4-17. The score is written in 3/4 time and consists of four staves. The first staff starts with a measure rest for 4 measures, followed by a repeat sign and a sequence of notes: G4, A4, B4, C5, B4, A4, G4, F4, E4, D4, C4. Chords A, E, and A are indicated above the first three measures. The second staff starts at measure 9 with notes: G4, A4, B4, C5, B4, A4, G4, F4, E4, D4, C4. Chords E, Fm, and E are indicated above the first three measures. The third staff starts at measure 13 with notes: G4, A4, B4, C5, B4, A4, G4, F4, E4, D4, C4. Chords A, D, Fm, and E are indicated above the first four measures. The fourth staff starts at measure 17 with notes: G4, A4, B4, C5, B4, A4, G4, F4, E4, D4, C4. Chords A, D, and A are indicated above the first three measures. The piece ends with a double bar line and repeat dots.

4.



# NOTA g



## 9. cvičení

4 D G D G D G D G

Ha-li, be-li, ko-ně v ze-li a hří - bátka v pe-tr - že-li.  
 Ha-li, dí-tě ko-lí - bu tě, až mi usneš, o-de - jdu tě.  
 Do za - hrádky na kar - lát-ky, do do - li-ny na ma - li-ny.

## 10. cvičení

4 G D G

Am C D  
 Bm Em C D G  
 Am Em C D G

# 5.

## 11. cvičení

Musical notation for exercise 11, measures 1-6. The first staff shows a treble clef, a common time signature (C), and a measure rest for 2 measures. The second staff shows a repeat sign followed by six measures of music. The notes are: G4 (quarter), A4 (quarter), B4 (quarter), C5 (quarter), G4 (half), G4 (quarter), A4 (quarter), B4 (quarter), C5 (quarter), G4 (half). The chords above the notes are: G, D, G, G, B7, Em.

## 12. cvičení

Musical notation for exercise 12, measures 1-17. The first staff shows a treble clef, a 3/4 time signature, and a measure rest for 4 measures. The second staff shows a repeat sign followed by three measures of music. The notes are: G4 (quarter), A4 (quarter), B4 (quarter), C5 (quarter), G4 (half). The chords above the notes are: G, D, G. The third staff (measures 7-10) has notes: G4 (quarter), A4 (quarter), B4 (quarter), C5 (quarter), G4 (half), G4 (quarter), A4 (quarter), B4 (quarter), C5 (quarter), G4 (half). The chords above are: Em, Am, C, D. The fourth staff (measures 11-14) has notes: G4 (quarter), A4 (quarter), B4 (quarter), C5 (quarter), G4 (half), G4 (quarter), A4 (quarter), B4 (quarter), C5 (quarter), G4 (half). The chords above are: Bm, Em, C, D. The fifth staff (measures 15-17) has notes: G4 (quarter), A4 (quarter), B4 (quarter), C5 (quarter), G4 (half). The chords above are: G, D, G.


## 13. cvičení

Musical notation for exercise 13. The first staff shows a treble clef, a key signature of two sharps (F# and C#), and a 3/4 time signature. There is a measure rest for 4 measures. The second staff shows a repeat sign followed by eight measures of music. The notes are: A4 (quarter), B4 (quarter), C5 (quarter), A4 (quarter), G4 (quarter), A4 (quarter), B4 (quarter), C5 (quarter), A4 (quarter), G4 (quarter), A4 (quarter), B4 (quarter), C5 (quarter), A4 (quarter), G4 (quarter), A4 (quarter). The chords above the notes are: A, Hmi, E, A, FISmi, D, E, A.

## 6.

14. cvičení

## MELU, MELU PŠENIČKU



4 G D G C G G D G C G

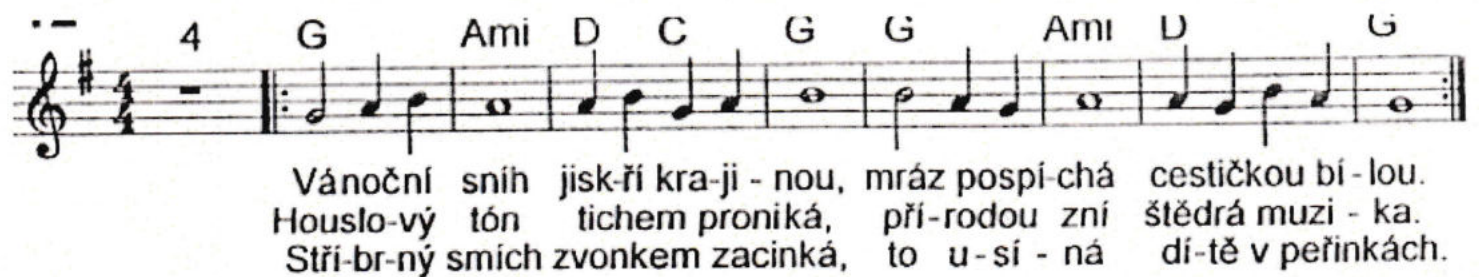
Me-lu, me-lu pšenič - ku do zla - té-ho hr-níč - ku.

G E A D G E A D G 4

Až u - me-lu, bu-du píct, až u - pe-ču, bu-du jíst.

15. cvičení

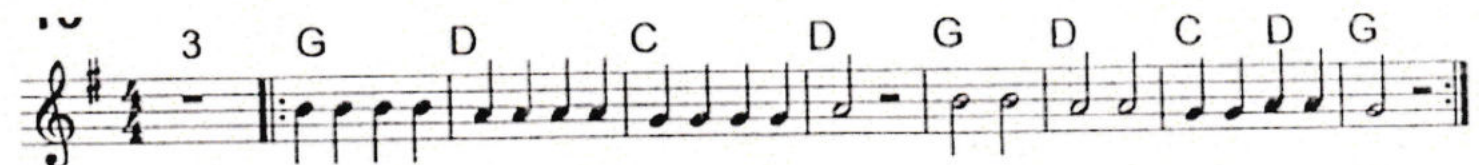
## VÁNOČNÍ SNÍH



4 G Am D C G G Am D G

Vánoční sníh jiskří kra-ji - nou, mráz pospí - chá cestičkou bí - lou.  
Houslo-vý tón tichem proniká, při-rodou zní štědrá muzi - ka.  
Stří-brný smích zvonkem zacinká, to u - sí - ná dí-tě v peřínkách.

16. cvičení



3 G D C D G D C D G

Ště - drý ve - čer, o - kna sví - tí, kde jsi, Je - žíš - ku?

Tě - ší - me se, pís - ká - me ti tu - hle pís - nič - ku.

17. cvičení

## PÍSNIČKA PRO JEŽÍŠKA



Ště - drý ve - čer, o - kna sví - tí, kde jsi, Je - žíš - ku?

Tě - ší - me se, pís - ká - me ti tu - hle pís - nič - ku.